



LAVALIERE

(Lapel Mic)

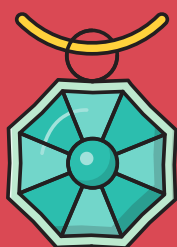
TIP SHEET

PLACEMENT



Clip the microphone about 6-8 inches below your chin, centered on your torso

WARDROBE



Avoid wearing voluminous clothing, necklaces, or lanyards that could create sounds the microphone will pick up

FACE FORWARD



Remember to keep your head and body aligned while speaking. If you need to turn to look at the screen, turn your whole body so your voice stays in the microphone's range

HANDS OFF



Keep your hands away from the microphone while speaking. Modify or eliminate gestures that could cause the microphone to pick up ambient noise instead of your voice!



SEAMLESS